

ESSENTIALS IN MOTION

K KAIDI

2025 PRODUCT CATALOG

Established in Changzhou, China in 1992, KAIDI has been a longstanding player in the linear drive industry. From day one, our focus on linear drive systems has positioned us as a global leader. This success has driven the formation of our core divisions, including Office, Home, Medical, Recliners, and Automotive. Today, we're rapidly gaining a strong foothold in each of these distinct markets.

KAIDI is deeply invested in the office furniture industry, continuously innovating to enhance product functionality and performance. With an intelligent drive system at its core, KAIDI develops personalized solutions tailored to diverse market needs and user experiences. The product lineup offers a wide range of configurations and cost-effective options, serving commercial offices, smart homes, automotive, and beyond.

3,000+

KAIDI Employees Worldwide

12+

Global Branches,
Offices and Warehouses

300+

Containers
Shipped Monthly

4.3

million
square feet
Production Area

100+

Global Sales Staff

300+

Technicians & Engineers

25+

Countries Serviced

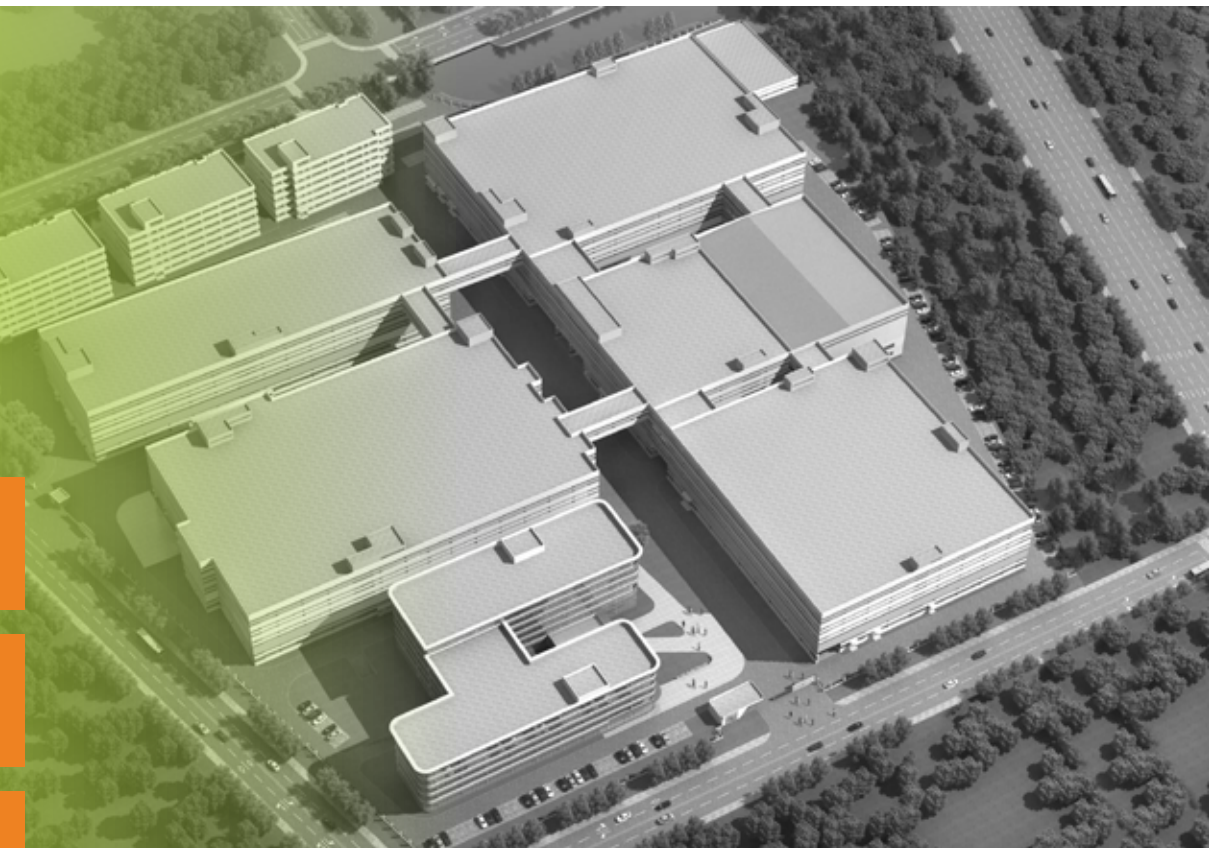
1+

million
Motors Produced
Monthly

Changzhou Headquarters
3,200,000 sq.ft

Grand Haven, Michigan
187,000 sq.ft

Ho Chi Minh, Vietnam
1,000,000 sq.ft





KAIDI specializes in crafting various desk frames and components with flexibility to fully customize their height-adjustable desks, focusing on intention and elegance. The designs feature a sleek, modern aesthetic, enabling users to transition seamlessly from sitting to standing with the touch of a button.

Significant investments in research and development, as well as manufacturing facilities, have led to the establishment of a complete industry chain for these products. This results in superior quality assurance and faster delivery times for clients.

KAIDI provides the opportunity to create a tailored, ergonomic workspace, perfectly aligned with the vision of clients. The commitment to innovation and customization positions Kaidi as the preferred choice for height-adjustable desk requirements.



QUICK REFERENCE GUIDE

**KAIDI GLOBAL
QUICK INSTALL**

**5-6
13-14**

KAIDI PRODUCTS
COLUMNS
HANDSETS
CONTROL BOXES
FEET

**17
23
29
33**

CERTIFICATIONS

37-38

OUR LOCATED FACILITIES AND SUPPLY NETWORKS ENSURE YOU GET FASTER RESPONSE TIMES, LOWER LOGISTICS COSTS, AND REGION-SPECIFIC SUPPORT—WHEREVER YOUR OPERATIONS ARE.

After years of development, KAIDI leads the industry by its adoption of high quality development and design capabilities. Our business model that permits low-cost and long-term growth strategy.

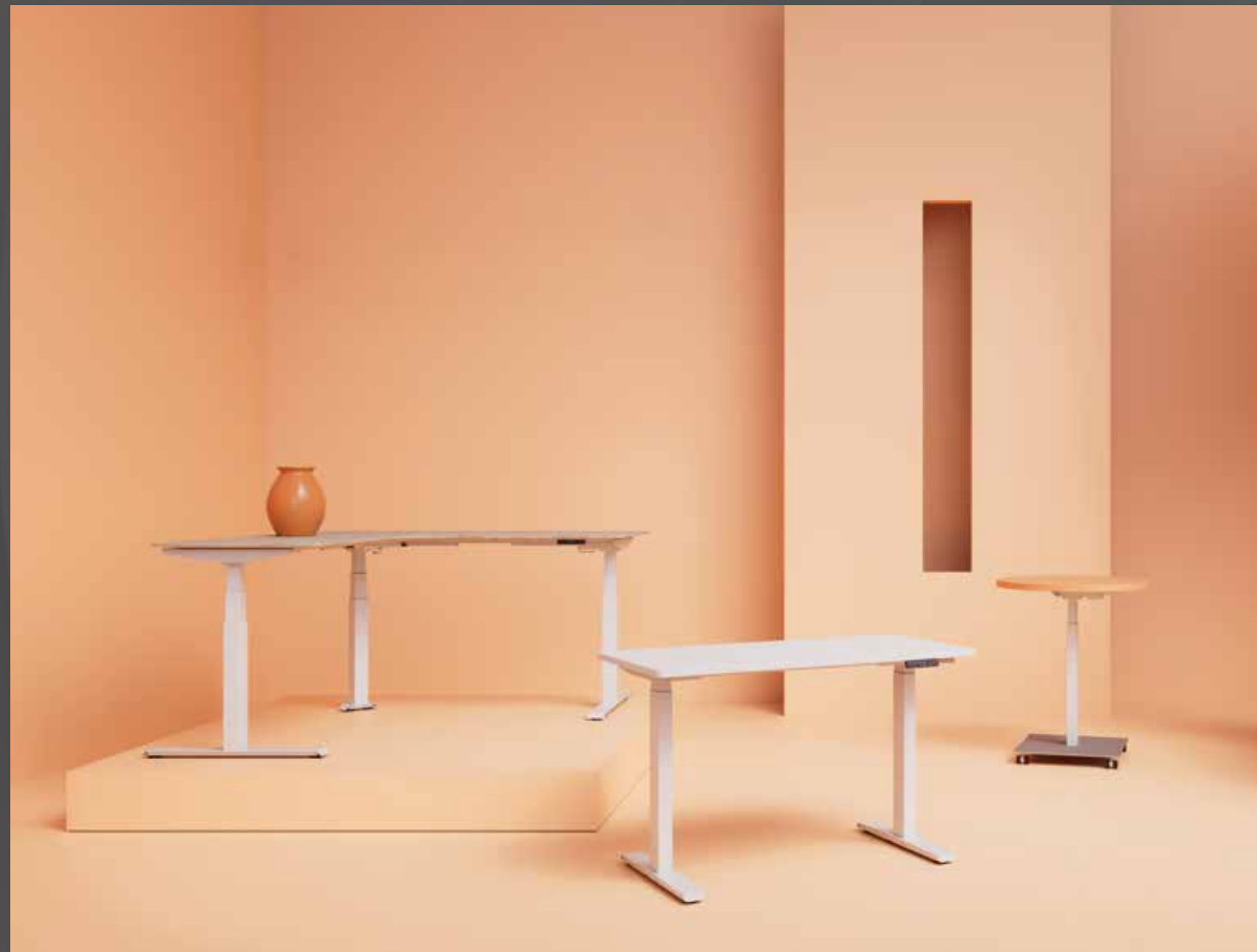
With strategically positioned facilities and supply networks across Asia, North America, and Europe, KAIDI is poised to deliver unmatched responsiveness. By producing closer to your operations, we slash lead times, simplify logistics, and offer region-specific support—all while maintaining the consistent quality and innovation from Changzhou.



NORTH AMERICA
Michigan
Mississippi

EUROPE
Landesbergen (Germany)
Munich (Germany)

ASIA
Changzhou HQ (China)
Guangzhou (China)
Tokyo (Japan)
Binh Duong (Vietnam)
Bangalore (India)





OUR BEST,
SO THAT YOU CAN
DO YOUR BEST



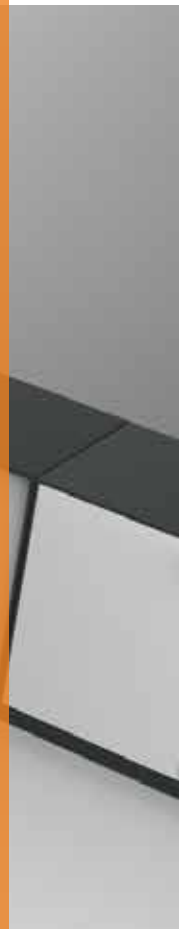
A classic desk frame designed for home and office. Modern design and excellent performance makes V2 bases our most popular model.

Pair our bases with your table top and offer your customers the flexibility they need to operate to their greatest potential.



A DESK MADE FOR A NEW SUSTAINABLE WORLD

This revolution in the way we work has been made possible by the wonders of technology. Enterprise-level tasks can now be accomplished on a multitude of devices, freeing us from traditional constraints. Simultaneously, electric height-adjustable desks are gaining remarkable popularity. These innovative workstations are not just a response to the sitting epidemic but a proactive measure to counter it. Whether you're a sitter or a stander, these desks have your health in mind, ensuring your well-being while you work.



TOOL LESS QUICK INSTALL



KAIDI bases blends user-friendliness, simplicity, and efficiency, creating a hassle-free experience for assembling an adjustable desk. This innovative design slashes installation time by a minimum of 50%, resulting in reduced labor costs compared to traditional alternatives

Compact motor housing for low-profile aesthetics that integrates seamlessly with cabinetry.

Tool-free installation - even frame-to-tabletop mounting requires no special equipment

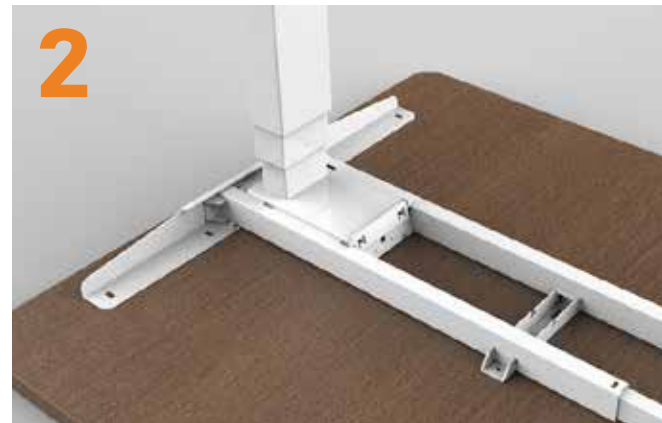
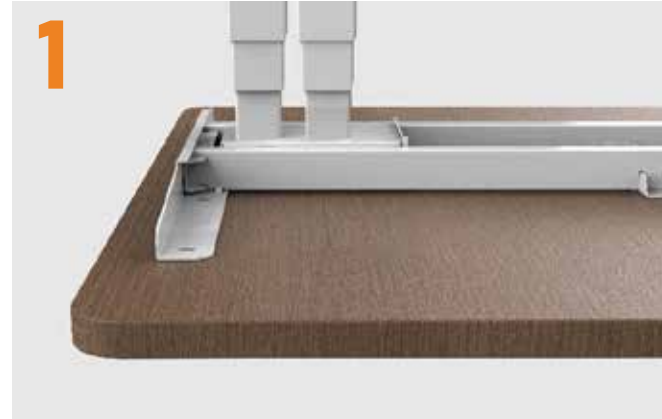
Next-generation motor and column system allowing for greater efficiency and reduced power consumption without sacrificing performance.

Effortlessly scale from 2-leg to multi-leg configurations.

Optimized shipping profile allows for more units per 40HQ container.

Optional integrated cable management system eliminates unsightly wires.

Convertible side beam design adapts to both T-style and C-style configurations for simplified inventory.



AN ABSOLUTE BREEZE TO INSTALL

STEP 1 : Place the column into frame assembly and slide the column to the end of the frame. Ensure the column's tabs are fully seated in the frame slots.

STEP 2 : With a forceful nudge, the column will seemingly snap into place.



COLUMNS

KAIDI columns are an important component of our height-adjusting tables. Columns are made of thickened Baosteel cold-rolled steel and supported by advanced drive system technology to provide a stable and smooth lifting force for the whole table.

Listed per-column performance specs calculated from use with KDDY094 Control Box. For other configurations, contact a KAIDI sales associate.



CONVENTIONAL

Performance values are based on symmetrical/equally distributed loading

Dual-Stage Stroke Options

Ⓢ 650	
Min. Height	21.1in / 536mm
Max. Height	47.2in / 1199mm
Ⓢ 663	
Min. Height	22.8in / 580mm
Max. Height	48.4in / 1230mm

Single-Stage Stroke Options

Ⓐ 440	
Min. Height	25.6in / 650mm
Max. Height	42.9in / 1090mm
Ⓑ 500	
Min. Height	26.1in / 662mm
Max. Height	45.7in / 1162mm

69mm x 69mm SQUARE



Speed	1.42 ⁱⁿ /sec / 36 ^{mm} /sec
Max Dynamic ^(per column)	176 lb. / 80 kg
Max Static ^(per column)	176 lb. / 80 kg
Rated Load ^(per column)	110 lb. / 50 kg



Speed	1.42 ⁱⁿ /sec / 36 ^{mm} /sec
Max Dynamic ^(per column)	176 lb. / 80 kg
Max Static ^(per column)	132 lb. / 60 kg
Rated Load ^(per column)	110 lb. / 50 kg

50mm x 80mm SMALL RECT.



Speed	1.42 ⁱⁿ /sec / 36 ^{mm} /sec
Max Dynamic ^(per column)	176 lb. / 80 kg
Max Static ^(per column)	176 lb. / 80 kg
Rated Load ^(per column)	110 lb. / 50 kg



Speed	1.42 ⁱⁿ /sec / 36 ^{mm} /sec
Max Dynamic ^(per column)	176 lb. / 80 kg
Max Static ^(per column)	132 lb. / 60 kg
Rated Load ^(per column)	110 lb. / 50 kg

60mm x 95mm LARGE RECT.

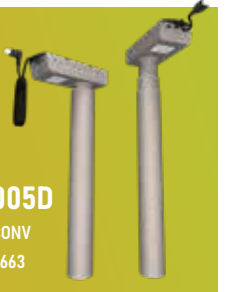


Speed	1.42 ⁱⁿ /sec / 36 ^{mm} /sec
Max Dynamic ^(per column)	176 lb. / 80 kg
Max Static ^(per column)	176 lb. / 80 kg
Rated Load ^(per column)	110 lb. / 50 kg



Speed	1.42 ⁱⁿ /sec / 36 ^{mm} /sec
Max Dynamic ^(per column)	176 lb. / 80 kg
Max Static ^(per column)	132 lb. / 60 kg
Rated Load ^(per column)	110 lb. / 50 kg

Ø69mm ROUND



Speed	1.42 ⁱⁿ /sec / 36 ^{mm} /sec
Max Dynamic ^(per column)	176 lb. / 80 kg
Max Static ^(per column)	176 lb. / 80 kg
Rated Load ^(per column)	110 lb. / 50 kg



Speed	1.42 ⁱⁿ /sec / 36 ^{mm} /sec
Max Dynamic ^(per column)	176 lb. / 80 kg
Max Static ^(per column)	132 lb. / 60 kg
Rated Load ^(per column)	110 lb. / 50 kg

Dual-Stage Stroke Options

Ⓢ 650

Min. Height21.1in / 536mm

Max. Height47.2in / 1199mm

Ⓢ 663

Min. Height22.8in / 580mm

Max. Height48.4in / 1230mm

69mm × 69mm SQUARE



KDZT006E

2-STAGE V2

Ⓢ 650 | Ⓢ 663

Speed	1.42 ⁱⁿ /sec / 36 ^{mm} /sec
Max Dynamic ^(per column)	176 lb. / 80 kg
Max Static ^(per column)	176 lb. / 80 kg
Rated Load ^(per column)	110 lb. / 50 kg

50mm × 80mm SMALL RECT.



KDZT024C

2-STAGE V2

Ⓢ 650 | Ⓢ 663

Speed	1.42 ⁱⁿ /sec / 36 ^{mm} /sec
Max Dynamic ^(per column)	176 lb. / 80 kg
Max Static ^(per column)	176 lb. / 80 kg
Rated Load ^(per column)	110 lb. / 50 kg

60mm × 95mm LARGE RECT.



KDZT020

2-STAGE V2

Ⓢ 650 | Ⓢ 663

Speed	1.42 ⁱⁿ /sec / 36 ^{mm} /sec
Max Dynamic ^(per column)	176 lb. / 80 kg
Max Static ^(per column)	176 lb. / 80 kg
Rated Load ^(per column)	110 lb. / 50 kg

Ø69mm ROUND



KDZT005E

2-STAGE V2

Ⓢ 650 | Ⓢ 663

Speed	1.42 ⁱⁿ /sec / 36 ^{mm} /sec
Max Dynamic ^(per column)	176 lb. / 80 kg
Max Static ^(per column)	176 lb. / 80 kg
Rated Load ^(per column)	110 lb. / 50 kg

Single-Stage Stroke Options

Ⓢ 440

Min. Height25.6in / 650mm

Max. Height42.9in / 1090mm

Ⓢ 500

Min. Height26.1in / 662mm

Max. Height45.7in / 1162mm

69mm × 69mm SQUARE



KDZT035A

1-STAGE V2

Ⓢ 440 | Ⓢ 500

Speed	1.42 ⁱⁿ /sec / 36 ^{mm} /sec
Max Dynamic ^(per column)	176 lb. / 80 kg
Max Static ^(per column)	132 lb. / 60 kg
Rated Load ^(per column)	110 lb. / 50 kg

50mm × 80mm SMALL RECT.



KDZT026A

1-STAGE V2

Ⓢ 440 | Ⓢ 500

Speed	1.42 ⁱⁿ /sec / 36 ^{mm} /sec
Max Dynamic ^(per column)	176 lb. / 80 kg
Max Static ^(per column)	132 lb. / 60 kg
Rated Load ^(per column)	110 lb. / 50 kg

60mm × 95mm LARGE RECT.



KDZT017B-2

1-STAGE V2

Ⓢ 440 | Ⓢ 500

Speed	1.42 ⁱⁿ /sec / 36 ^{mm} /sec
Max Dynamic ^(per column)	176 lb. / 80 kg
Max Static ^(per column)	132 lb. / 60 kg
Rated Load ^(per column)	110 lb. / 50 kg

Ø69mm ROUND



KDZT003A

1-STAGE V2

Ⓢ 440 | Ⓢ 500

Speed	1.42 ⁱⁿ /sec / 36 ^{mm} /sec
Max Dynamic ^(per column)	176 lb. / 80 kg
Max Static ^(per column)	132 lb. / 60 kg
Rated Load ^(per column)	110 lb. / 50 kg

69mm x 69mm SQUARE

50mm x 80mm SMALL RECT.

60mm x 95mm LARGE RECT.

FAST INSTALL, EVEN BETTER PERFORMANCE

The KAIDI V4 Quick-Install columns feature an innovative all-in-one latching mechanism that simplifies installation to just three steps. By consolidating multiple components into a single intuitive lever, we've eliminated tool requirements and reduced alignment adjustments—cutting typical setup time in half while ensuring perfect column positioning every time.

KDZT072

2-STAGE V4
Ⓢ 650 | Ⓢ 663

Speed	1.42 ⁱⁿ /sec / 36 ^{mm} /sec
Max Dynamic ^(per column)	180 lb. / 81.5 kg
Max Static ^(per column)	180 lb. / 81.5 kg
Rated Load ^(per column)	134 lb. / 61.2 kg

KDZT065

2-STAGE V4
Ⓢ 650 | Ⓢ 663

Speed	1.42 ⁱⁿ /sec / 36 ^{mm} /sec
Max Dynamic ^(per column)	180 lb. / 81.5 kg
Max Static ^(per column)	180 lb. / 81.5 kg
Rated Load ^(per column)	134 lb. / 61.2 kg

KDZT073

2-STAGE V4
Ⓢ 650 | Ⓢ 663

Speed	1.42 ⁱⁿ /sec / 36 ^{mm} /sec
Max Dynamic ^(per column)	180 lb. / 81.5 kg
Max Static ^(per column)	180 lb. / 81.5 kg
Rated Load ^(per column)	134 lb. / 61.2 kg

KDZT070

1-STAGE V4
Ⓢ 440 | Ⓢ 500

Speed	1.42 ⁱⁿ /sec / 36 ^{mm} /sec
Max Dynamic ^(per column)	180 lb. / 81.5 kg
Max Static ^(per column)	180 lb. / 81.5 kg
Rated Load ^(per column)	134 lb. / 61.2 kg

KDZT066

1-STAGE V4
Ⓢ 440 | Ⓢ 500

Speed	1.42 ⁱⁿ /sec / 36 ^{mm} /sec
Max Dynamic ^(per column)	180 lb. / 81.5 kg
Max Static ^(per column)	180 lb. / 81.5 kg
Rated Load ^(per column)	134 lb. / 61.2 kg

KDZT071

1-STAGE V4
Ⓢ 440 | Ⓢ 500

Speed	1.42 ⁱⁿ /sec / 36 ^{mm} /sec
Max Dynamic ^(per column)	180 lb. / 81.5 kg
Max Static ^(per column)	180 lb. / 81.5 kg
Rated Load ^(per column)	134 lb. / 61.2 kg



FAST INSTALL,
EVEN BETTER
PERFORMANCE

The KAIDI V4 Quick-Install columns feature an innovative all-in-one latching mechanism that simplifies installation to just three steps. By consolidating multiple components into a single intuitive lever, we've eliminated tool requirements and reduced alignment adjustments—cutting typical setup time in half while ensuring perfect column positioning every time.

Dual-Stage
Stroke Options

Ⓢ 650

Min. Height 21.1in / 536mm

Max. Height 47.2in / 1199mm

Ⓢ 663

Min. Height 22.8in / 580mm

Max. Height 48.4in / 1230mm

Single-Stage
Stroke Options

Ⓢ 440

Min. Height 25.6in / 650mm


Max. Height 42.9in / 1090mm

Ⓢ 500

Min. Height 26.1in / 662mm


Max. Height 45.7in / 1162mm

69mm × 69mm SQUARE



KDZT006E-7
2-STAGE V2
HEAVY DUTY
Ⓢ 650 | Ⓢ 663
Calculated specs with KDDY094N


Speed	1.42 ⁱⁿ / _{sec} / 36 ^{mm} / _{sec}
Max Dynamic <small>(^{PER}_{column})</small>	176 lb. / 80 kg
Max Static <small>(^{PER}_{column})</small>	300 lb. / 136 kg
Rated Load <small>(^{PER}_{column})</small>	160 lb. / 72.5 kg



KDZT041A
2-STAGE CONV
HEAVY DUTY
Ⓢ 650 | Ⓢ 663

Speed	1.42 ⁱⁿ / _{sec} / 36 ^{mm} / _{sec}
Max Dynamic <small>(^{PER}_{column})</small>	175 lb. / 80 kg
Max Static <small>(^{PER}_{column})</small>	175 lb. / 80 kg
Rated Load <small>(^{PER}_{column})</small>	125 lb. / 57 kg

50mm × 80mm SMALL RECT.



KDZT024C-9
2-STAGE CONV
COMPATIBILITY MODEL
Ⓢ 650 | Ⓢ 663

Speed	1.42 ⁱⁿ / _{sec} / 36 ^{mm} / _{sec}
Max Dynamic <small>(^{PER}_{column})</small>	176 lb. / 80 kg
Max Static <small>(^{PER}_{column})</small>	176 lb. / 80 kg
Rated Load <small>(^{PER}_{column})</small>	125 lb. / 56.5 kg



KDZT047
1-STAGE CONV
INVERTED | ECONOMY
Ⓢ 440 | Ⓢ 500


Speed	0.98 ⁱⁿ / _{sec} / 25 ^{mm} / _{sec}
Max Dynamic <small>(^{PER}_{column})</small>	110 lb. / 50 kg
Max Static <small>(^{PER}_{column})</small>	132 lb. / 60 kg
Rated Load <small>(^{PER}_{column})</small>	110 lb. / 50 kg



PERFORMANCE,
PRICED JUST RIGHT

Engineered for reliability in solo applications, our single-motor base is the workhorse of the lineup—delivering smooth, consistent lifts day in and day out.

50mm × 80mm SMALL RECT.



KDZT056
1-STAGE CONV
INVERTED
Ⓢ 440 | Ⓢ 500

Speed	1.42 ⁱⁿ / _{sec} / 36 ^{mm} / _{sec}
Max Dynamic	157 lb. / 71.4 kg
Max Static	157 lb. / 71.4 kg
Rated Load	110 lb. / 49.9 kg

60mm × 95mm LARGE RECT.



KDZT068
1-STAGE CONV
INVERTED
Ⓢ 440 | Ⓢ 500

Speed	1.42 ⁱⁿ / _{sec} / 36 ^{mm} / _{sec}
Max Dynamic	157 lb. / 71.4 kg
Max Static	157 lb. / 71.4 kg
Rated Load	110 lb. / 49.9 kg

HANDSETS

The handset serves as the central control station for height-adjustable desks, featuring a compact design and an intuitive operating system. With functions like sit-stand reminders, one-touch height adjustment, and memory presets, it delivers a smarter and efficient user experience.



KDH064C



- Digital Display
- Three Memory Positions
- Anti-Collision Ability
- Black

KDH187



- Two Keys
- Touch Feedback
- Brushed Metal

KDH191



- Flush mounted, Built-In
- Touch Feedback

KDH192



- Paddle Handset
- Two Memory Positions
- Touch Feedback

KDH126



- Keeping It Simple
- Two Keys

KDBH12



- OLED Digital Display
- Two Memory Positions
- Color Options: White, Gold, Grey, Pink

KDBH36



- Flush mounted, Built-In
- Four Memory Positions
- Touch Feedback

KDBH32



- Paddle Handset
- Black



Paddle Handset
Two Memory Positions
OLED Display
Anti-Collision Ability
Black



Quick Mount
OLED Display
Two Memory Positions
RGB Lit Stripe
Black



Quick Mount
Two Memory Positions
Black



Paddle Handset
Two Memory Positions
Touch Feedback
Anti-Collision Ability
Black



Three Memory Positions
Grey



Paddle Handset
Two Memory Positions
Touch Feedback
Anti-Collision Ability
Black



Four Memory Positions
Touch Feedback
Anti-Collision Ability
Black



Three Memory Positions
Flush mounted, Built-In
Touch Feedback
Black



Bluetooth Dongle
Adds Bluetooth Functionality KAIDI handsets

ALL-IN-ONE COMBO HANDSETS

Advanced control system combines powerful processing with energy-efficient operation while simplifying components and installation. KAIDI All-in-One control boxes are designed for intelligent operation, ensures smooth performance.



Collision Detection is optional for All-In-One Handsets.
To get the most of your KAIDI base, pair with the KDBH18 gyro attachment.

KDBC15



Columns/Ports 1
Three Memory Positions
Black

KDBC16



Columns/Ports 1
Two Buttons
Black

KDBC18



Columns/Ports 2
Three Memory Positions
Black

KDBC21



Columns/Ports 2
OLED Display
Two Memory Positions
USB-A or USB-C Charging Ports
Black, or White

KDBC30



Columns/Ports 3
Three Memory Positions
Black

KDBC31



Columns/Ports 1
Three Memory Positions
Black



CONTROL BOXES

The control box features a powerful core that seamlessly integrates multiple command codes, ensuring fast and efficient processing. With low energy consumption and precise control, it optimizes performance, keeping the entire desk system running smoothly and reliably.

KDDY094B



2-PORT AC > DC STANDARD V2 DAISY-CHAIN CONTROL BOX			
Columns/Ports	2 4 6 8 10 with Daisy-Chain Port	Duty Cycle	1 minute ON / 9 minute OFF (10%)
Input	110V _{DC} -240V _{DC}	Compatability	Conventional V2
Input Power	3.33A @ 120V _{DC} (400W)	Features	Daisy-Chain Capability
Output Power	2 × 8.00A @ 20V _{DC} (2 × 160W = 320W)		Gyro Collision Detection Current Overload Protection Screw Mounting

KDDY104



1-PORT DC > DC V2 CONTROL BOX			
Columns/Ports	1 2	Duty Cycle	1 minute ON / 9 minute OFF (10%)
Input Voltage	29V _{DC}	Compatability	Conventional V2 Single-Motor
Input Power	8.00A @ 29V _{DC} (232W)	Features	Gyro Collision Detection Wall or Battery Power Screw Mounting
Output Power	1 × 8.00A @ 22V _{DC} (1 × 176W = 176W) 2 × 4.00A @ 22V _{DC} (2 × 88W = 176W)		

KDDY094N



2-PORT AC > DC HEAVY DUTY V2 CONTROL BOX			
Columns/Ports	2	Duty Cycle	1 minute ON / 9 minute OFF (10%)
Input	100V _{DC} -240V _{DC}	Compatability	Conventional V2
Input Power	4.17A @ 120V _{DC} (500W)	Features	Gyro Collision Detection Current Overload Protection Screw Mounting
Output Power	2 × 6.50A @ 30V _{DC} (2 × 195W = 390W)		

KDDY094



2-PORT AC > DC STANDARD V2 CONTROL BOX			
Columns/Ports	2	Duty Cycle	1 minute ON / 9 minute OFF (10%)
Input	100V _{DC} -240V _{DC}	Compatability	Conventional V2
Input Power	3.33A @ 120V _{DC} (400W)	Features	Gyro Collision Detection Current Overload Protection Screw Mounting
Output Power	2 × 8.00A @ 20V _{DC} (2 × 160W = 320W)		

KDDY099



3-PORT AC > DC STANDARD V2 CONTROL BOX			
Columns/Ports	3	Duty Cycle	1 minute ON / 9 minute OFF (10%)
Input	100V _{DC} -240V _{DC}	Compatability	Conventional V2
Input Power	3.75A @ 120V _{DC} (450W)	Features	Gyro Collision Detection Current Overload Protection Screw Mounting
Output Power	3 × 3.50A @ 30V _{DC} (3×105W = 315W)		

KDDY106



4-PORT AC > DC STANDARD V2 CONTROL BOX

Columns/Ports	4	Duty Cycle	1 minute ON / 9 minute OFF (10%)
Input	100V _{DC} ~240V _{DC}	Compatability	Conventional V2
Input Power	4.17A @ 120V _{DC} (500W)	Features	Gyro Collision Detection Current Overload Protection Screw Mounting
Output Power	4 x 4.00A @ 24V _{DC} (4 x 96W = 384W)		

KDDY008F



AC > DC Power Supply - Wall Adapter

Input Voltage	100-240V _{AC}
Input Power	2.00A @ 120V _{AC} (240W)
Output Power	4.00A @ 29V _{AC} (116W)
Duty Cycle	2 minute ON / 18 minute OFF
Compatability	KDDY104 All-In-One Handsets

KDDY008H



AC > DC Power Supply - Inline Adapter

Input Voltage	100-240V _{AC}
Input Power	2.00A @ 120V _{AC} (240W)
Output Power	4.00A @ 29V _{AC} (116W)
Duty Cycle	2 minute ON / 18 minute OFF
Compatability	KDDY104 All-In-One Handsets

KDDY008K



AC > DC Power Supply - Inline Adapter

Input Voltage	100-240V _{AC}
Input Power	1.67A @ 120V _{AC} (200W)
Output Power	3.60A @ 29V _{AC} (104W)
Duty Cycle	2 minute ON / 18 minute OFF
Compatability	KDDY104 All-In-One Handsets

KDBC40



2-PORT AC > DC STANDARD ALL-NEW V4 CONTROL BOX

Columns/Ports	2	Duty Cycle	2 minute ON / 18 minute OFF (10%)
Input	100V _{DC} ~120V _{DC}	Compatability	Conventional (Partial) V2 (Partial) All-New V4
Input Power	2.92A @ 120V _{DC} (350W)	Features	Gyro Collision Detection Current Overload Protection New, Tool-Free Quick-Mount
Output Power	2 x 5.00A @ 24V _{DC} (2 x 120W = 240W)		

KDDY008L



AC > DC Power Supply - Inline Adapter

Input Voltage	100-240V _{AC}
Input Power	3.33A @ 120V _{AC} (400W)
Output Power	6.00A @ 29V _{AC} (174W)
Duty Cycle	2 minute ON / 18 minute OFF
Compatability	KDDY104 All-In-One Handsets

KDBC50

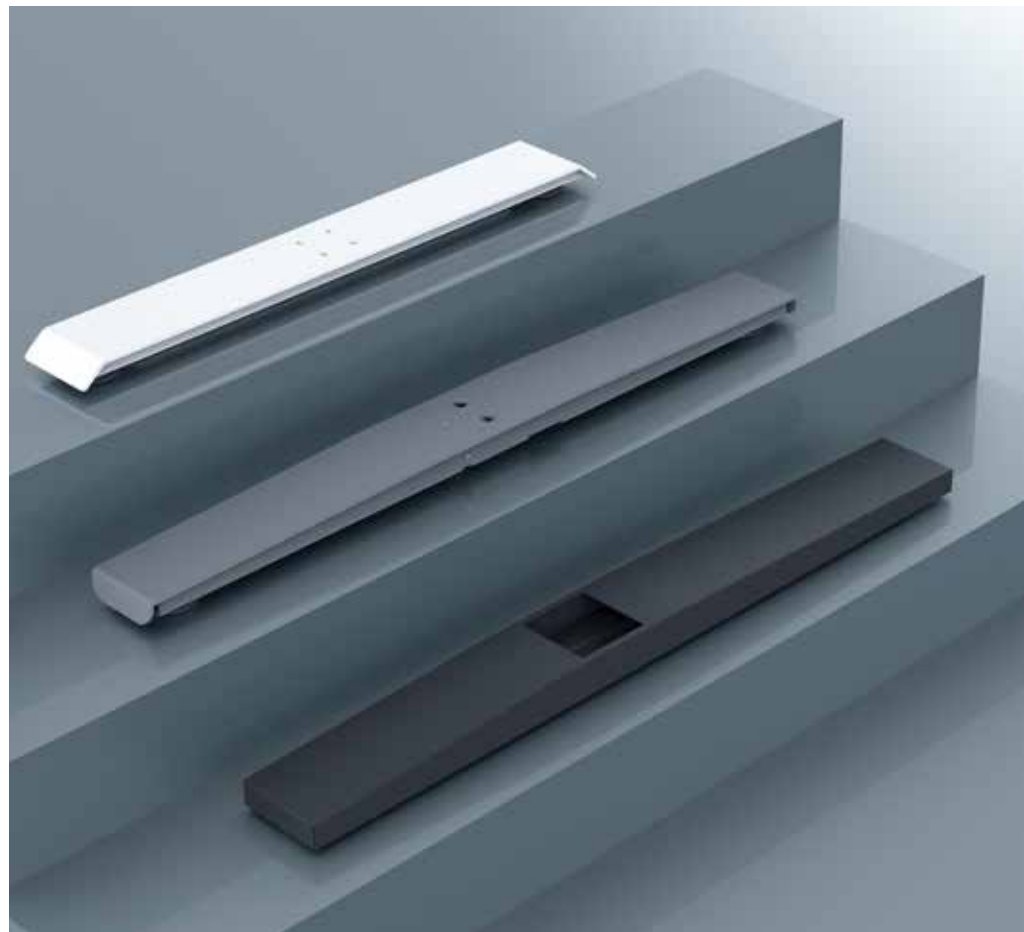


3-PORT AC > DC STANDARD ALL-NEW V4 CONTROL BOX

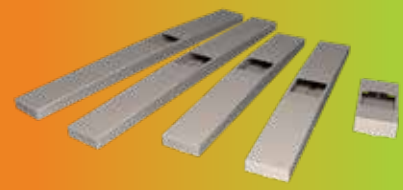
Columns/Ports	3	Duty Cycle	2 minute ON / 18 minute OFF (10%)
Input	100V _{DC} ~120V _{DC}	Compatability	Conventional (Partial) V2 (Partial) All-New V4
Input Power	3.33A @ 120V _{DC} (400W)	Features	Gyro Collision Detection Current Overload Protection New, Tool-Free Quick-Mount
Output Power	3 x 4.00A @ 26V _{DC} (3 x 104W = 312W)		

FEET SERIES

KAIDI columns are an important component of our height-adjusting tables. Columns are made of thickened Baosteel cold-rolled steel and supported by advanced drive system technology to provide a stable and smooth lifting force for the whole table.



KDF004 SERIES



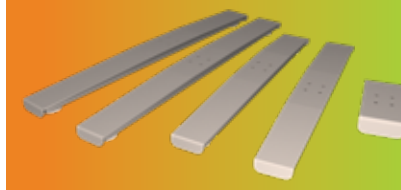
Mounting Hole Position	Centered T-Style		Off-Centered C-Style		
Model #	-3	-1	-4	-2	-5
Size	30" T	30" C	24" T	24" C	7" T
Mounting	Recessed for Square Column				

KDF015 SERIES



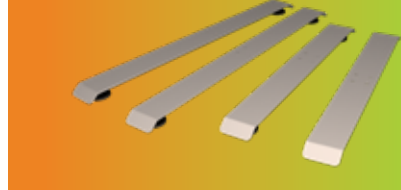
Mounting Hole Position	Centered T-Style		Off-Centered C-Style		
Model #	-3	-1	-4	-2	
Size	30" T	30" C	24" T	24" C	
Mounting	External Top Mount				

KDF005 SERIES



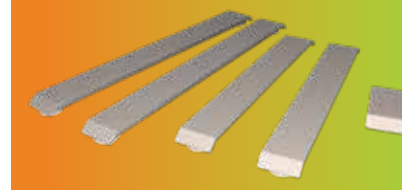
Mounting Hole Position	Centered T-Style		Off-Centered C-Style		
Model #	-3	-1	-4	-2	-5
Size	30" T	30" C	24" T	24" C	7" T
Mounting	External Top Mount				

KDF027 SERIES



Mounting Hole Position	Centered T-Style		Off-Centered C-Style		
Model #	-3	-1	-4	-2	
Size	30" T	30" C	24" T	24" C	
Mounting	External Top Mount				

KDF006 SERIES

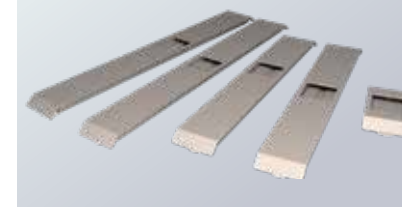


MULTIPLE MOUNTING OPTIONS AVAILABLE

External Top Mount for any profile	KDF006 C
HEAVY DUTY External Top Mount	KDF006 _
Recessed for Square Profile	KDF006 D
Recessed for Slim Rect. Profile	KDF006 F
Recessed for Lg. Rect Profile	KDF006 E

Mounting Hole Position	Centered T-Style		Off-Centered C-Style		
Model #	-3	-1	-4	-2	-5
Length	30" T	30" C	24" T	24" C	7" T

Example: KDF006D Series for Square Profile



KDF029 SERIES



Lever Quick-Install

Mounting Hole Position	Centered T-Style		Off-Centered C-Style	
Model #	-3	-1	-4	-2
Size	30" T	30" C	24" T	24" C
Mounting	Top Mount Quick Install			

KDF036



Mounting Hole Position	Centered
Size	25" x 21"
Mounting	External Top Mount
Installation	Podium

KDF019



Mounting Hole Position	Centered
Size	20" x 20"
Mounting	External Top Mount
Installation	Podium

KDF040



Mounting Hole Position	Centered
Size	Ø26"
Mounting	External
Installation	Podium

KDF035 SERIES



Mounting Hole Position	Centered T-Style		Off-Centered C-Style		
Model #	-4	-5	-1	-3	-2
Size	30" T	30" C	24" T	24" C	8" T
Mounting	External Top Mount				

KDF006C-9 FOR KAIDI FORTRESS



Mounting Hole Positions	Centered, Two Mount Locations
Size	29"
Mounting	External Top Mount

CAP-STYLE FLOOR LEVELER ADAPTERS



Circle Profile	KDF012
Large Rect Profile	KDF009
Slim Rect Profile	KDF025
Square Profile	KDF007

KDF010



INTERNAL FLOOR LEVELER ADAPTER

Mounting Hole Position	Centered
Size (mm)	46 x 46 x 16
Mounting	External





KAIDI is dedicated to world-class manufacturing. We are validated by our comprehensive suite of international certifications. We maintain rigorous compliance with ISO 9001:2015 (Quality Management), ISO 14001:2015 (Environmental Management), and OHSAS 18001:2007 (Occupational Health and Safety) standards - ensuring every product meets exacting benchmarks for performance, sustainability, and workplace safety.

These achievements represent more than plaques on our wall - they're our promise of reliability that's been independently verified across global markets. When you specify KAIDI, you're choosing solutions that have already passed the world's toughest quality hurdles..





NORTH AMERICA

1425 Aerial View Dr · Grand Haven, Michigan 49417

kaidiofficeusa.com