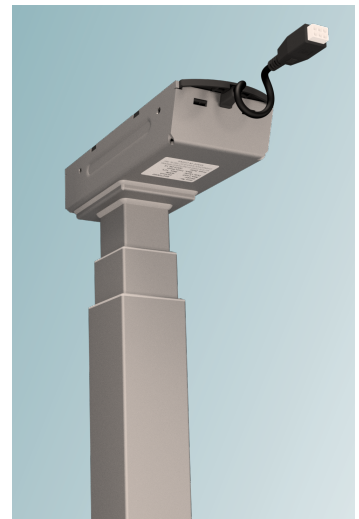
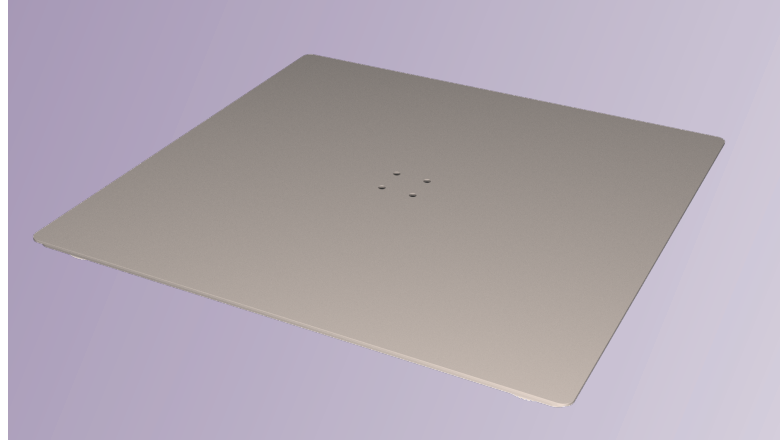




COMPACT DESIGN, PERFECT FOR SMALL SPACES
SINGLE-LEG, DUAL STAGE



FEATURES:

- Adaptable in various environments; whether in home offices, dorm rooms, or creative studios
- Lightweight construction
- Reduced weight for easier transportation and installation
- Added mobility to foster more a dynamic and collaborative work environment

FEATURING KDH064 HANDSET

Our
Best Selling
Handset

3-Position Memory

Digital Readout
Shows Error Codes

Adjustable Gyro and
Anti-Collision Sensitivity

TECHNICAL SPECS

Speed

Max Dynamic Load

Max Lift

Max Static Load

Max Locking Force

Rated Load

Rated at 10,000 cycles

Operational Noise

Stroke Distance

Height Range

Feet + Column + Frame. Without Top

DUAL STAGE

1.42in/sec / 36mm/sec

150lb / 68kg

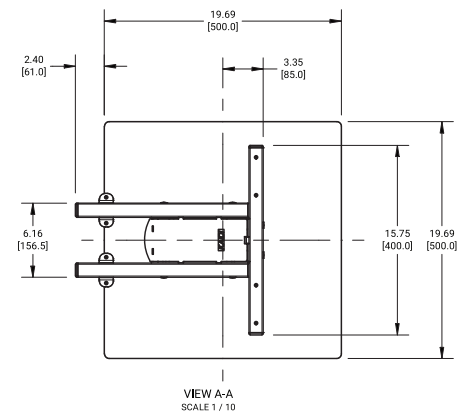
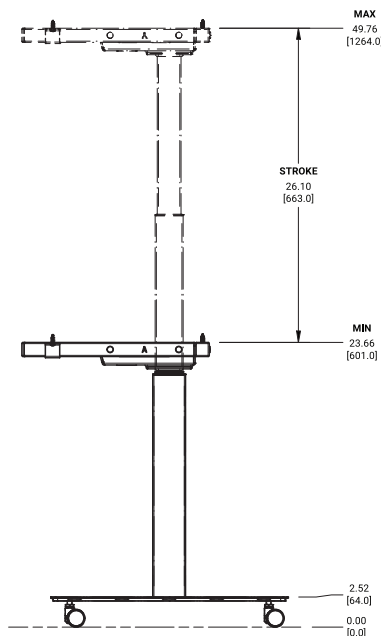
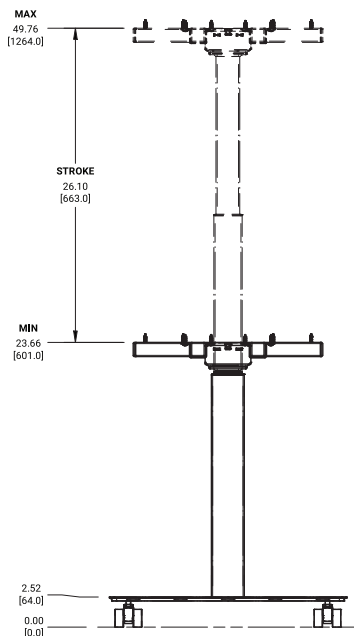
150lb / 68kg

110lb / 50kg

<50dB

25.6in / 650mm

21.1-47.2in / 536-1199mm



LIFTING COLUMNS

Profile

Square, Outer Tube

Dimensions

2.72in×2.72in / 69mm×69mm

FOOT CONFIGURATION

Configuration

Centered

Dimensions

19.7in × 19.7in × 0.7in
500mm × 500mm × 19mm

FRAME

Rcmd. Desktop Size **MIN** 21.5 × 21.5in / 546 × 546mm

MAX 30 × 30 in / 914 × 914mm

FINISHES

Black, Silver, White

1-BOX SHIPPING

Package Dimensions 23.2in × 21.6in × 5.9in

590mm × 550mm × 150mm

Package Weight

DUAL STAGE 37.5lbs / 70 kg