



## **ELECTRIC HEIGHT ADJUSTABLE TABLE Assembly Instructions**



# WARNINGS



Carefully read all instructions and review all illustrations before installing. Failure to observe these warnings could result in a fire, electric shock, or personal injury.



Table should be built in the room it is intended to be used in. Use two people with flipping or moving the table.



Ensure there are no obstacles above or below the table that would prevent movement. All cords must be appropriate length to accommodate the table's full range of height.



Keep unsupervised children away from this height adjustable table. Ensure children understand the dangers of operating this table without supervision.



Keep electrical components away from liquids. Components to be opened by professional technicians only. Use this table indoors only.



Do not sit or stand on table's base or worksurface. Weight rating is 220 lbs; including worksurface. Do not exceed.

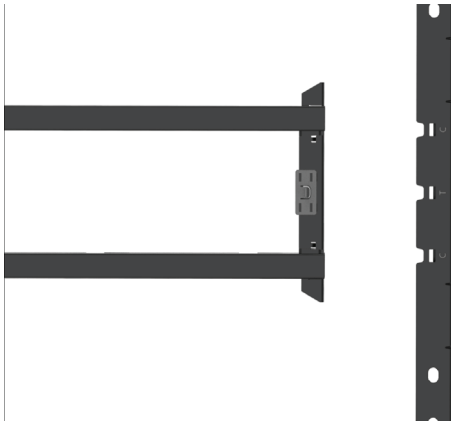


This table is designed for a 10% duty cycle, meaning, for every minute of operation the table should be allowed to rest for 9 minutes.



In the event of a power outage, or if any cord is unplugged, an initialization is required.

# 1



**Install the Universal Side Beams**

Note your intended desk style:

**T-Style (Symmetrical):** Align the side beam with the center marks, labelled T.

**C-Style (Offset):** Align the side beam with the offset marks, labelled C.



Ensure the beam is securely fastened in the correct position before proceeding.

Install the second Universal Side Beam on the opposite side

# 2



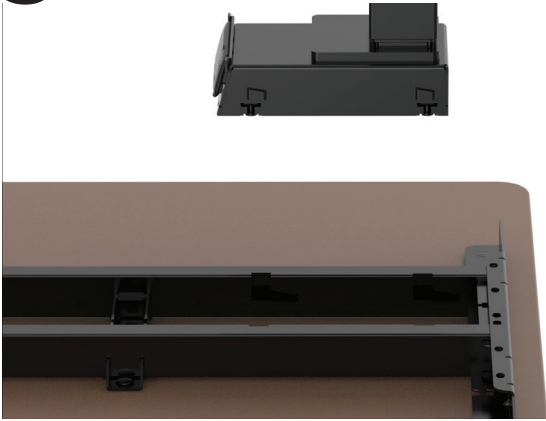
Place on the tabletop. Ensure that the correct side of this assembly is facing upwards.

Frame assembly contains extension bars pre-installed. Extend the frame and match the holes of the frame to the pre-drilled holes of the tabletop.



Using the provided M5 x 20mm screws fasten the frame assembly to the tabletop. (16 screws, total)

# 3

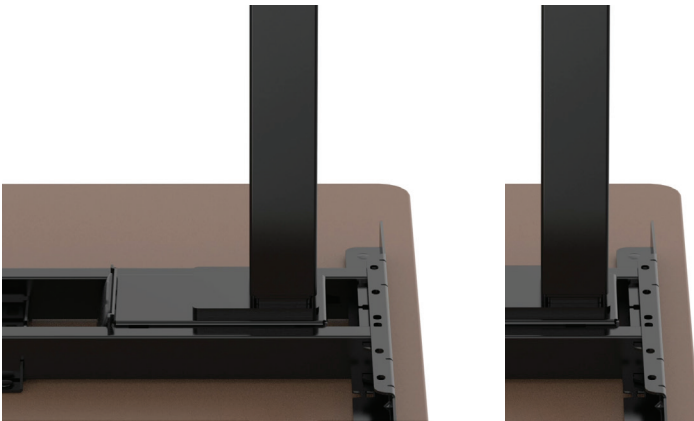


## Install the Lifting Columns

With KAIDI V4 Quick Install, lifting columns are installed quickly and easily.

Align the lifting column between the bars of the frame.

Note the protruding nubs of the motor housing of the column and the slots of the frame.



Slots in the frame will guide the lifting column.

Using very firm force, nudge the lifting column to the furthest extent of the frame.

The spring-loaded clip on the motor housing will self-lock in the notch of the frame assembly.

Insure that this clip is fully seated.

The disassembly latch can be folded down.



Install the second lifting columns with the same steps above.

# 4



## Install the Feet

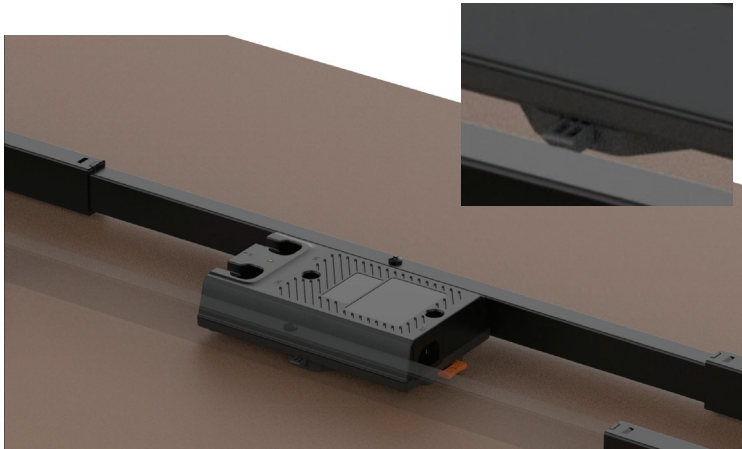
Noting the orientation of the feet, turn the feet so that the floor levelers are facing up, thus will be touching the floor when the desk is in use.

Gently align the holes of the feet to the posts of the lifting columns.



Using the provided M6 x 15mm screws and an 5mm allen key, tighten the feet to the lifting columns. (8 screws, total)

# 5



## Install the Quick Mount Control Box

The new KDBC40 Control Box easily drops in between the extension bars of the frame assembly.

The use of the retracting clips between the frame extension bars and the table top allows the control box to be situated wherever it best serves your purposes.

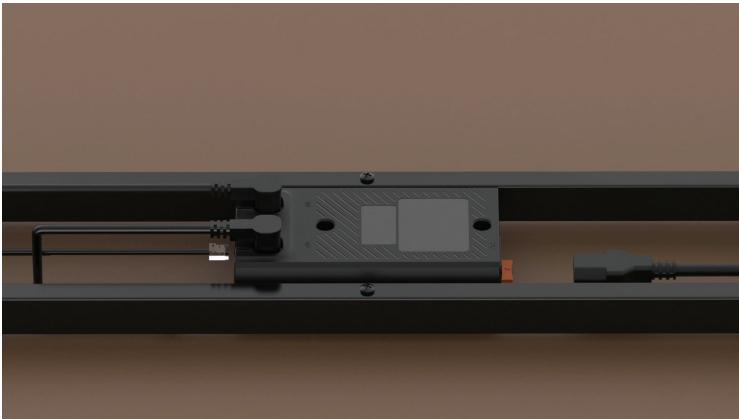
# 6



## Installing the Handset

You are free to fasten the KDH064C handset wherever it best serves your purposes.

Use the provided M3 x 20mm screws to fasten the handset to the table top.



Route the connections to the corresponding ports of the control box.

Handset cable  
Lifting Column cables  
Power Cable

Use the provided Wire Manager clips to organize the cables.





## DO NOT USE BASE UNTIL INITIALIZATION STEPS HAVE BEEN TAKEN

Note: Check to make sure that the power cable and the table are free and clear of any obstacles. Table and cords must be able to ascend and descend without any binding, tightness, pulling, or collision interference. Check all cords to assure they are fully seated and secured with the built-in connector clip and control box is level and securely fastened to the underside of the work surface.

1

Simultaneously, press and hold the UP and DOWN buttons. The legs will begin to descend at half-speed of normal operation. Do not release buttons.

2

Continue holding both buttons. The legs will descend to the lowest position and then 'rebound' slightly. This rebound indicates that the base is initialized.

3

Release the UP and DOWN buttons. Initialization is complete. Table can now be utilized in normal fashion.

## ANTI-COLLISION

This table is equipped with a gyroscopic anti-collision system that is designed to detect unexpected changes in velocity and quickly reverse the motion of the table. This anti-collision system is only intended to help reduce the risk of the table causing accidental injury or damage and will not completely prevent incidents of collision.

Extreme care should always be used when operating this table to ensure no obstructions interfere with its motion.