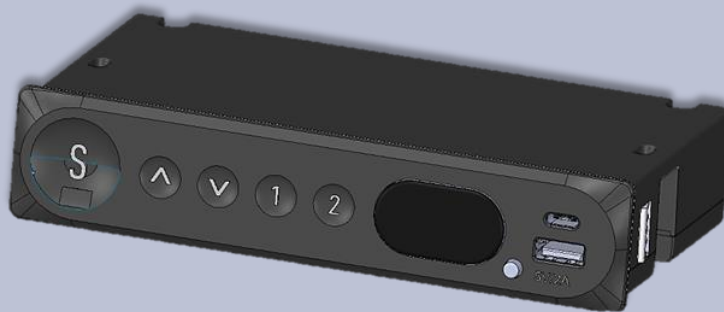


Specification Sheet

HANDSET – KDBC21



CATEGORY:

FRAME

COLUMN

FOOT

CONTROL BOX

HANDSET
DESCRIPTION

HANDSET, OLED DISPLAY, USB-C, 2 POS. MEMORY

PART NUMBER
KDBC21
FEATURES

- 2-POSITION MEMORY
- OLED DISPLAY
- ERROR CODES
- INITIALIZATION
- ONE-TOUCH FUNCTION
- CHILD LOCK MODE
- SEDENTARY REMINDERS
- TEMPERATURE AND HUMIDITY DETECTION
- USB-C AND USB-A CHARGING PORTS

OPTIONS

- METRIC OR STANDARD DISPLAY
- DISPLAY HEIGHT ADJUSTMENT
- ADJUST GYRO ANTI COLLISION SENSITIVITY

SPECIFICATIONS

VOLTAGE	20	
CONNECTION POINT	N/A	
CABLE LENGTH	N/A	
PROTECTION GRADE	IP20	
CONTROL BOX	ALL	
COLOR	BLACK	
HARDWARE INCLUDED	YES	
OPERATING CONDITIONS	RELATIVE HUMIDITY	20% - 75%
	AMBIENT TEMPERATURE	5°C - 40°C (41°F - 104°F)

DIMENSIONS

