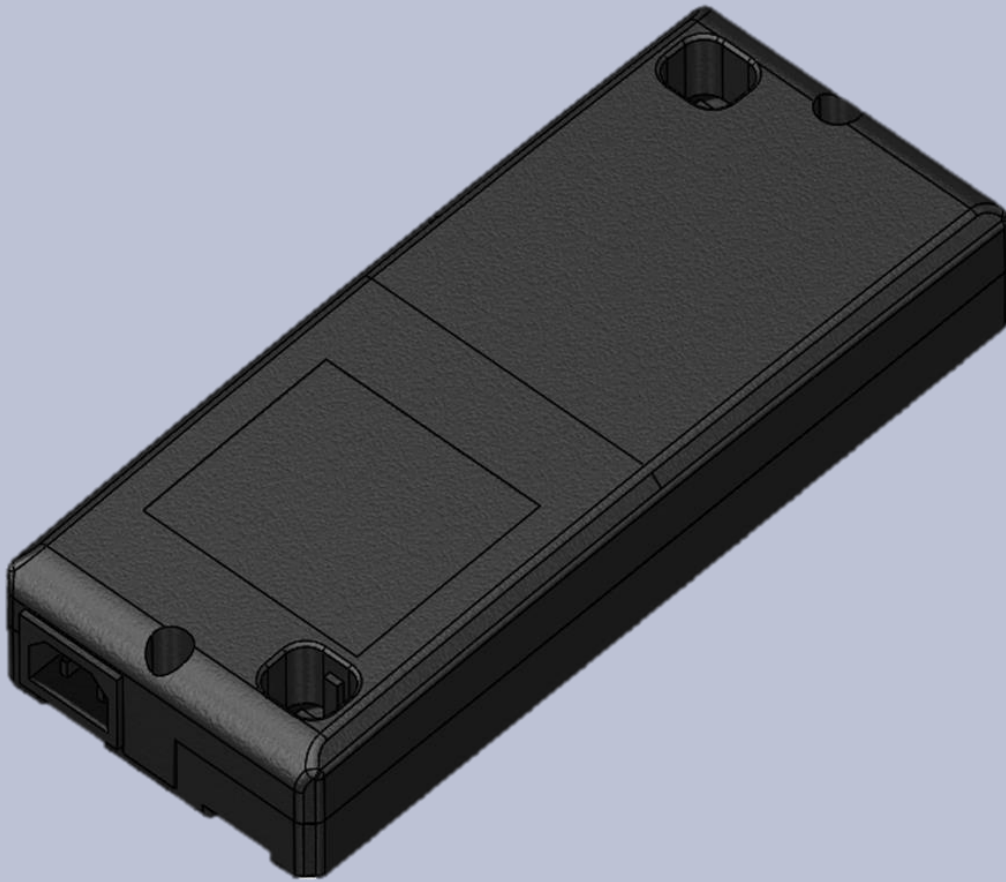


Specification Sheet

CONTROL BOX – KDDY094N



CATEGORY: FRAME COLUMN FOOT **CONTROL BOX** HANDSET

DESCRIPTION

Control Box, 2 Ports, 110-240V, 500W

PART NUMBER

KDDY094N

FEATURES

- ANTI-COLLISION AND GYRO SENSORS
- PROTECTION AGAINST OVER-CURRENT
- LOW STANDBY POWER CONSUMPTION ($\leq 0.3W$)
- INITIALIZATION
- ERROR CODES

OPTIONS

- 440, 500, 650 OR 663MM STROKE
- LIFT SPEED
- SENSOR SENSITIVITY

SPECIFICATIONS

METRIC

ENGLISH

SPECIFICATIONS	METRIC	ENGLISH
SPEED	$\leq 36MM/S$	$\leq 1.4IN/S$
STROKE	440, 500, 650 OR 663MM	17.3, 19.7, 25.6 OR 26.1IN
DIMENSIONS (LXWXH)	237.5x97.5x43.5MM	10.77x3.84x1.71IN
OVERHEATING PROTECTION	$80^{\circ}\pm 5^{\circ}C$	$176^{\circ}\pm 9^{\circ}F$
VOLTAGE	110-240VAC	
OUTPUT	30VDC, 6.5A EACH PORT	
STANDBY POWER	$\leq 0.3W$	
DUTY CYCLE	10%, MAX. 1MIN ON/9MIN OFF	
OVERLOAD PROTECTION	$\geq 20A$	
PROTECTION GRADE	IP20	
UL NUMBER	E340036-A6006-UL	
FLAME CLASS	UL94-V0	
CERTIFICATIONS	UL	
PORTS	2	
MEMORY	UP TO 4 POSITIONS	
COLOR	BLACK	
OPERATING CONDITIONS	RELATIVE HUMIDITY	20%~80% @30°C
	ATMOSPHERIC PRESSURE	700hPa~1060hPa
	AMBIENT TEMPERATURE	+5°C~+40°C (41°F - 104°F)

DIMENSIONS

