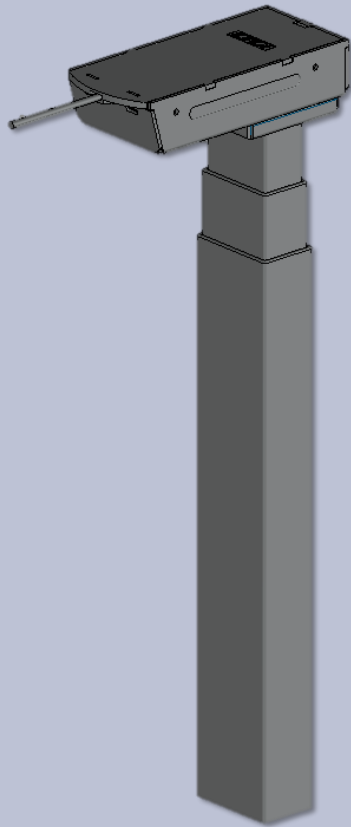


Specification Sheet

COLUMN – KDZT024C



CATEGORY:

FRAME

COLUMN

FOOT

CONTROL BOX

HANDSET

DESCRIPTION

Rectangle Slim Leg Profile, Dual Stage Column

PART NUMBER

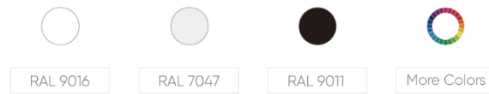
KDZT024C

FEATURES

- ANTI-COLLISION TECHNOLOGY
- HIGH STABILITY
- LOW NOISE LEVEL (<50 dB)
- VERY LOW STANDBY POWER CONSUMPTION
- NO SIDE HOLES ON TUBES

OPTIONS

- STROKE LENGTH
- COLOR



SPECIFICATIONS

METRIC

ENGLISH

DYNAMIC LOAD CAPACITY	82KG	180LBF
STATIC LOAD CAPACITY	61KG	135LBF
RATED LOAD	51KG	112LBF
SPEED	36MM/S	1.42IN/S
MIN HEIGHT	536 OR 580MM	21.1 OR 22.8IN
MAX HEIGHT	1199 OR 1230MM	47.2 OR 48.4IN
STROKE	663 OR 650MM	26.1 OR 25.6IN
COLUMN PROFILE	50X80MM	1.97X3.15IN
PRODUCT WEIGHT	7.6KG	16.8LBS
MATERIAL	SPCC STEEL	
INPUT VOLTAGE	24VDC	
DUTY CYCLE	10%, MAX 1MIN ON/9MIN OFF	
NOISE LEVEL	45-48dB	
PROTECTION GRADE	IP20	
UL CERTIFICATION	E321853	
CONTROL BOX	230VAC or 120VAC	
ASSEMBLY	CONVENTIONAL	
OPERATING CONDITIONS	RELATIVE HUMIDITY	20% - 80%
	AMBIENT TEMPERATURE	5°C - 40°C (41°F - 104°F)

DIMENSIONS

