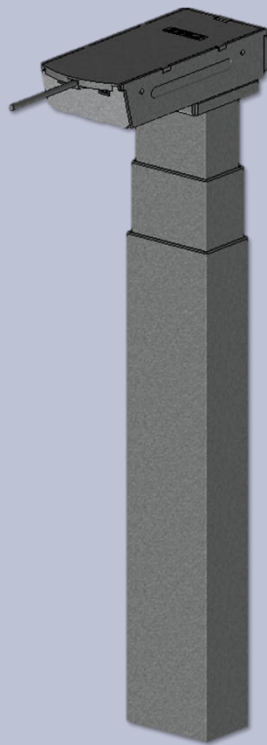


Specification Sheet

COLUMN – KDZT011C



CATEGORY:

FRAME

COLUMN

FOOT

CONTROL BOX

HANDSET

DESCRIPTION

Rectangle Leg Profile, Dual Stage Column

PART NUMBER
KDZT011C
FEATURES

- ANTI-COLLISION TECHNOLOGY
- HIGH STABILITY
- LOW NOISE LEVEL (<50 dB)
- VERY LOW STANDBY POWER CONSUMPTION
- NO SIDE HOLES ON TUBES

OPTIONS

- COLOR

SPECIFICATIONS

METRIC

ENGLISH

SPECIFICATIONS	METRIC	ENGLISH
DYNAMIC LOAD CAPACITY	82KG	180LBF
STATIC LOAD CAPACITY	61KG	135LBF
RATED LOAD	50KG	110LBF
SPEED	36MM/S	1.42IN/S
MIN HEIGHT	536MM	21.1IN
MAX HEIGHT	1199MM	47.2IN
STROKE	663MM	26.1IN
COLUMN PROFILE	60X95MM	2.36X3.74IN
PRODUCT WEIGHT	7.6KG	16.8LBS
MATERIAL	SPCC STEEL	
INPUT VOLTAGE	20VDC	
DUTY CYCLE	10%, MAX 1MIN ON/9MIN OFF	
NOISE LEVEL	45-48dB	
PROTECTION GRADE	IP42	
UL CERTIFICATION	E321853	
CONTROL BOX	230VAC or 120VAC	
ASSEMBLY	CONVENTIONAL	
OPERATING CONDITIONS	RELATIVE HUMIDITY	20% - 80%
	AMBIENT TEMPERATURE	5°C - 40°C (41°F - 104°F)

DIMENSIONS

