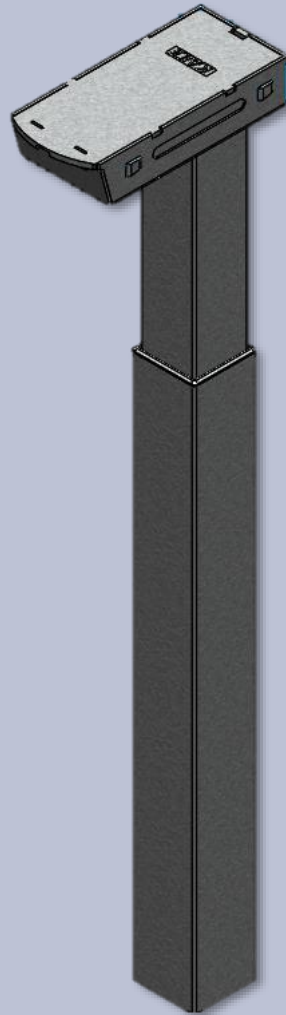


Specification Sheet

COLUMN – KDZT035A



CATEGORY:

FRAME

COLUMN

FOOT

CONTROL BOX

HANDSET

DESCRIPTION

Square Leg, Quick-Install, Single Stage Column

PART NUMBER

KDZT035A

FEATURES

- ANTI-COLLISION TECHNOLOGY
- HIGH STABILITY
- LOW NOISE LEVEL (<50 dB)
- VERY LOW STANDBY POWER CONSUMPTION
- QUICK-INSTALL
- NO SIDE HOLES ON TUBES

OPTIONS

- STROKE LENGTH
- COLOR

SPECIFICATIONS	METRIC	ENGLISH
DYNAMIC LOAD CAPACITY	82KG	180LBF
STATIC LOAD CAPACITY	61KG	135LBF
RATED LOAD	50KG	110LBF
SPEED	36MM/S	1.42IN/S
MIN HEIGHT	650 OR 662MM	25.6 OR 26.1IN
MAX HEIGHT	1090 OR 1162MM	42.9 OR 45.7IN
STROKE	440 OR 500MM	17.3 OR 19.7IN
COLUMN PROFILE	69X69MM	2.72X2.72IN
PRODUCT WEIGHT	6KG	13.2LBS
MATERIAL	SPCC STEEL	
INPUT VOLTAGE	20VDC	
DUTY CYCLE	10%, MAX 1MIN ON/9MIN OFF	
NOISE LEVEL	45-48dB	
PROTECTION GRADE	IP42	
UL CERTIFICATION	E321853	
CONTROL BOX	230VAC or 120VAC	
ASSEMBLY	QUICK-INSTALL	
OPERATING CONDITIONS	RELATIVE HUMIDITY	20% - 75%
	AMBIENT TEMPERATURE	5°C - 40°C (41°F - 104°F)

DIMENSIONS

