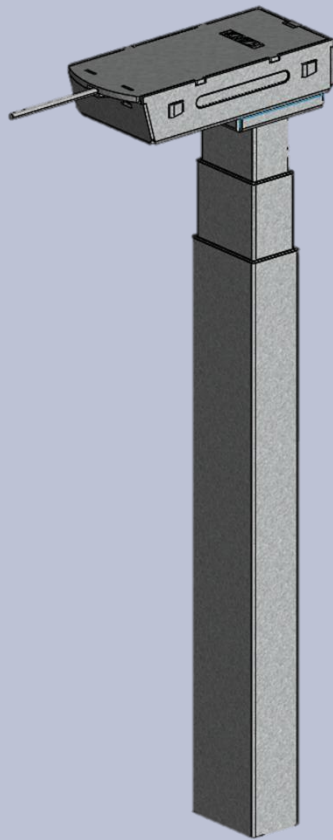


# Specification Sheet

COLUMN – KDZT024A



CATEGORY:

FRAME

COLUMN

FOOT

CONTROL BOX

HANDSET

**DESCRIPTION**

Rectangle Slim Leg Profile, Quick-Install, Dual

**PART NUMBER**

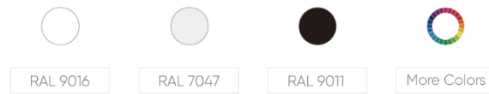
**KDZT024A**

**FEATURES**

- ANTI-COLLISION TECHNOLOGY
- HIGH STABILITY
- LOW NOISE LEVEL (<50 dB)
- VERY LOW STANDBY POWER CONSUMPTION
- QUICK-INSTALL
- NO SIDE HOLES ON TUBES

**OPTIONS**

- STROKE LENGTH
- COLOR



**SPECIFICATIONS**

METRIC

ENGLISH

SPECIFICATIONS	METRIC	ENGLISH
<b>DYNAMIC LOAD CAPACITY</b>	82KG	180LBF
<b>STATIC LOAD CAPACITY</b>	61KG	135LBF
<b>RATED LOAD</b>	50KG	110LBF
<b>SPEED</b>	36MM/S	1.42IN/S
<b>MIN HEIGHT</b>	536 OR 580MM	21.1 OR 22.8IN
<b>MAX HEIGHT</b>	1199 OR 1230MM	47.2 OR 48.4IN
<b>STROKE</b>	663 OR 650MM	26.1 OR 25.6IN
<b>COLUMN PROFILE</b>	50X80MM	1.97X3.15IN
<b>PRODUCT WEIGHT</b>	7.6KG	16.8LBS
<b>MATERIAL</b>	SPCC STEEL	
<b>INPUT VOLTAGE</b>	20VDC	
<b>DUTY CYCLE</b>	10%, MAX 1MIN ON/9MIN OFF	
<b>NOISE LEVEL</b>	45-48dB	
<b>PROTECTION GRADE</b>	IP42	
<b>UL CERTIFICATION</b>	E321853	
<b>CONTROL BOX</b>	230VAC or 120VAC	
<b>ASSEMBLY</b>	QUICK-INSTALL	
<b>OPERATING CONDITIONS</b>	RELATIVE HUMIDITY	20% - 80%
	AMBIENT TEMPERATURE	5°C - 40°C (41°F - 104°F)

**DIMENSIONS**

